

CONTRACTOR CONNECTION



VOL 5

OCT 15, 2021 - DEC 2021

— WE WORK HARDER, DOING WHATEVER IT TAKES, TO BE YOUR PREFERRED SUPPLIER —



Check out new Diablo Products >>> >>> >>>
at every branch

SPECIALS



DIABLO DEMO DEMON
6 in. Carbide General purpose Recip
3-pack
General purpose nail-embedded wood & metal
MFG#: DS0609CGP3

- CARBIDE TEETH
- FASTER CUTS
- LESS VIBRATION
- PLUNGE TIP DESIGN

\$15.80/
Pack



DIABLO DEMO DEMON
9 in. Carbide General purpose Recip
3-pack
General purpose nail-embedded wood & metal
MFG#: DS0909CGP3

- CARBIDE TEETH
- FASTER CUTS
- LESS VIBRATION
- PLUNGE TIP DESIGN

\$21.02/
Pack



DIABLO DEMO DEMON
6 in. Carbide Recip Blade for Nail-Embedded Wood
3-pack
Nail-embedded wood
MFG#: DS0606CWS3

- CARBIDE TEETH
- FASTER CUTS
- LESS VIBRATION
- PLUNGE TIP DESIGN

\$14.33/
Pack



DIABLO DEMO DEMON
9 in. Carbide Recip Blade for Nail-Embedded Wood
3-pack
Nail-embedded wood
MFG#: DS0906CWS3

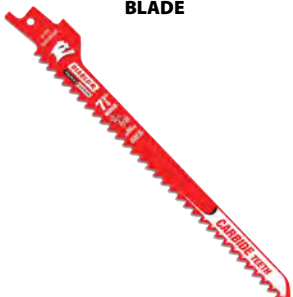
- CARBIDE TEETH
- FASTER CUTS
- LESS VIBRATION
- PLUNGE TIP DESIGN

\$20.53/
Pack



NEW PRODUCTS

CARBIDE ROUGH-IN RECIPROCATING BLADE



MFG#: DS0705CWR3

STEEL DEMON AMPED THICK METAL



MFG#: DS0908CPA

UNIVERSAL FIT GENERAL PURPOSE OSCILLATING BLADE SET (5 PK)



MFG#: DOU5S

REBAR DEMON



DIABLO MADE ~~DURA CARBIDE~~

SDS max

MFG#: DS0908CPA

WE WORK HARDER

(877) NE SUPPLY • NORTHEASTERN.COM

Northeastern Supply reserves the right to cancel, revoke and discontinue any offer at any time without prior notification.



NORTHEASTERN SUPPLY

PLUMBING • HVAC • WATER SYSTEMS • PVF

BEYOND XPECTATIONS



**WHOLE HOUSE AIR TREATMENT
APCO-X**

\$419.99

MFG# : TUVAPCOXER3

FRESH-AIRE UV

INDOOR AIR QUALITY INNOVATION

FRESH-AIRE BLUE TUBE UV LAMP - 2 YEAR BULB

MFG# : TUV-BTER2

- (1) Power Supply
- (1) 6' Lamp Cable
- (1) UV Lamp
- (1) Magnetic 'Z' Bracket
- (1) Mounting Hardware
- (1) Panel Indicator
- (1) Installation Sticker

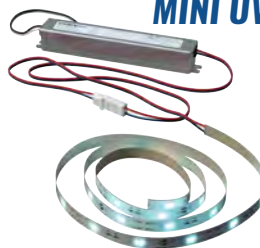
\$161.99



MINI UV LED SYSTEM FOR MINI-SPLITS

MFG# : TUVMINILED

\$212.99



DIVERSITECH[®]

ASURITY CONDENSATE PUMP (120V, 22' LIFT)

MFG# : PROCP22S



FEATURES

- 22 feet maximum lift height
- Suitable for condensate up to 160°F.
- Sturdy metal hang tabs
- Built-in safety overflow switch
- Includes removable check valve
- 4 inlet holes

\$39.99

HOLDRITE[®] HYDROFLAME[™] PRO SERIES



FIRESTOP SLEEVE WITH LOCATOR WHISKER
8 TO 12" L, PLASTIC AND METAL, TELESCOPING



MFG#	DESCRIPTION	PRICE
HFP-P2	1-1/4 - 2" FIRE SLEEVE	\$ 10.75
HFP-P3	2" - 3" FIRE SLEEVE	\$ 13.99
HFP-P4	4" FIRE SLEEVE	\$ 18.89

Firestop re-engineered.

HOLDRITE HYDROFLAME FIRESTOP CAULK/SEALANT



MFG#	DESCRIPTION	PRICE
HF100-20S	High STC rating 65	\$ 8.50
HF200-20S	High performance intumescent	\$ 12.29

TESTRITE 2" - 4" DIAMETER SCHEDULE 40 PLUG



MFG#	DESCRIPTION	PRICE
TRW2V	TESTRITE 2" DIA SCHEDULE 40 PLUG	\$ 19.49
TRW3V	TESTRITE 3" DIA SCHEDULE 40 PLUG	\$ 21.59
TRW4V	TESTRITE 4" DIA SCHEDULE 40 PLUG	\$ 24.99

TESTRITE SCHEDULE 40 TEE



MFG#	DESCRIPTION	PRICE
TRPVC2A	2IN X 2IN X 2IN DIA SCHEDULE 40 TEE	\$ 6.89
TRPVC3A	3IN X 3IN X 3IN DIA SCHEDULE 40 TEE	\$ 9.99
TRPVC4A	4IN X 4IN X 4IN DIA SCHEDULE 40 TEE	\$ 16.99

HYDROFLAME 20 OUNCE REPLACEMENT TIPS/CONES

MFG #: HFCG-T20

\$1.75



HYDROFLAME FIRESTOP 20-OZ RATCHET CAULK GUN

MFG #HF-CG-20SP

\$41.49



Aprilaire®



MFG #700(M)



MFG #600M



MFG #800

Fits Aprilaire Models:
110, 220, 500, 500A, 500M,
550, 558

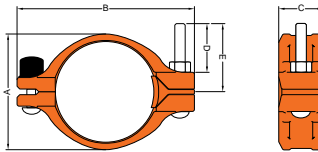


Fits Aprilaire Models:
350, 360, 560, 568, 600,
600A, 600M, 700, 700A,
700M, 760, 768



MFG#	DESCRIPTION	PRICE
700M	LARGE FAN POWER HUMIDIFIER W/ MANUAL HUMIDISTAT	\$ 279.99
700	LARGE FAN POWER HUMIDIFIER - AUTOMATIC	\$ 319.99
600M	BYPASS HUMIDIFIER W/ MANUAL CONTROL	\$ 156.99
800	STEAM HUMIDIFIER WHOLE HOUSE	\$ 712.99
10	REPLACEMENT WATER PANEL FOR WHOLE HOUSE HUMIDIFIER	\$ 5.97
35	REPLACEMENT WATER PANEL FOR WHOLE HOUSE HUMIDIFIER	\$ 8.35

INTRODUCING THE NEW GROOVED QUICK COUPLING FROM SHURJOINT. SAVES TIME WITH ONLY ONE BOLT!



PART#	DESCRIPTION	PRICE
SHUSJTM072PEHM	2" One Bolt Grooved Stab Coupling	\$15.75
SHUSJTM0725PEHM	2-1/2" One Bolt Grooved Stab Coupling	\$17.99
SHUSJTM073PEHM	3" One Bolt Grooved Stab Coupling	\$19.99
SHUSJTM074PEHM	4" One Bolt Grooved Stab Coupling	\$28.69
SHUSJTM076PEHM	6" One Bolt Grooved Stab Coupling	\$48.99



Baltimore, MD
Elkton, MD
Elderburg, MD
Bel Air, MD
Westminster, MD
Jessup, MD
Leonardtown, MD
Landover, MD
Timonium, MD

Middletown, DE
Camden, DE
Ocean City, MD
Martinsburg, WV
Baltimore, MD
Owings Mills, MD
Alexandria, VA
Winchester, VA
Hagerstown, MD

Hanover, PA
Carlisle, PA
York, PA
Easton, MD
Salisbury, MD
Dulles, VA
Prince Frederick, MD
Aberdeen, MD
Georgetown, DE

Front Royal, VA
Pocomoke City, MD
Manassas, VA
Newport/Wilmington, DE
Seaford, DE
Chestertown, MD
Cambridge, MD
Lorton, VA
Harrisonburg, VA



SUMP PUMP, CAST IRON - 1/3HP



5 YEAR WARRANTY

92371, VERTICAL FLOAT SWITCH

\$119.99

SALE! SPECIAL DISCOUNT LIMITED TIME ONLY



ARTICBAN-50RV/MARINE ANTIFREEZE

\$4.99
PER GALLON

GAL-50ANTIFREEZE

PRE-ASSEMBLED PRIMARY AND BACKUP SUMP PUMP KIT, 1/3 HP, BATT B/U



92971, VERTICAL FLOAT SWITCH

\$379.99



MFG #EVC080C2X045

MFG #EVR052C2X045N08



Advanced Heating & Hot Water Systems

Everlast Electric Water Heater, 80 Gallon

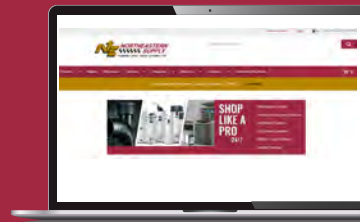
MFG #: EVC080C2X045

\$1499

Everlast Residential Electric Water Heater, 52 Gallon

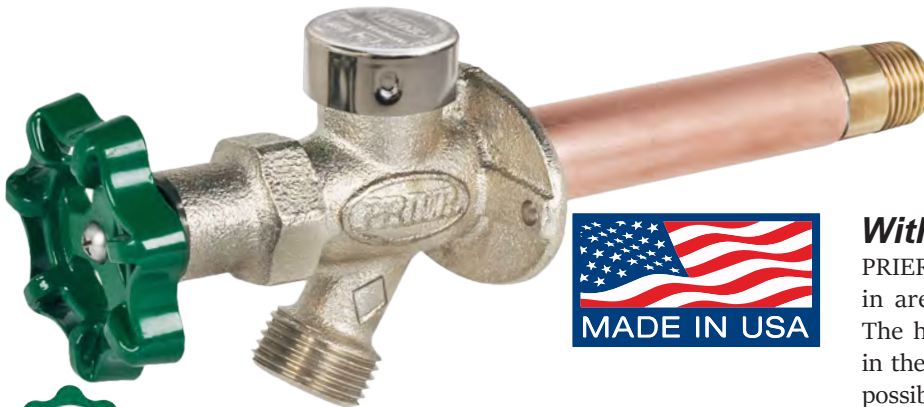
MFG #: EVR052C2X045N08

\$699



SHOP LIKE A PRO!!!

C-144/244 Series Freezeless Wall Hydrant



D Style
1/2" MPT x 1/2" SWT



C Style
1/2" CPVC Glue-In

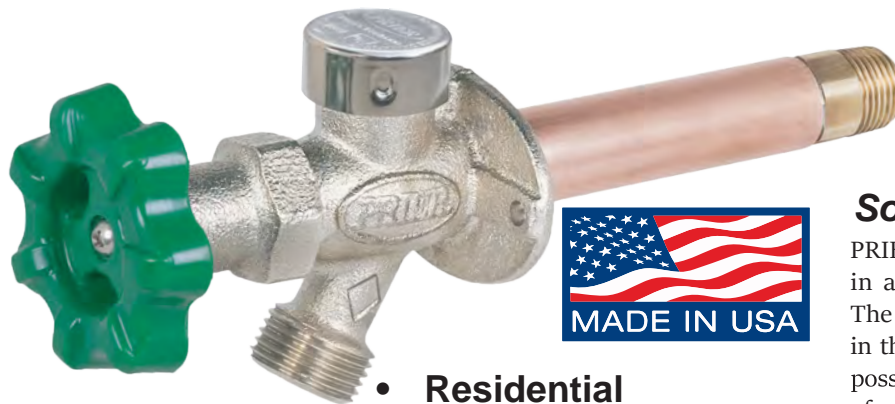
- Residential
- Freezeless
- Anti-Siphon
- Backflow Check Valve

With Anti-Siphon Vacuum Breaker

PRIER C-144 provides a year round source of water in areas that are subject to freezing temperatures. The hydrant valve is connected to the supply piping in the heated portion of the structure, eliminating the possibility of freezing. Ordering the C-244 gives you the same style hydrant but with a vandal proof extended lockshield and operating key.

The PRIER C-144 has all the characteristics of the historically proven C-134 with the added protection of an anti-siphon vacuum breaker and backflow check valve. It is available from stock in lengths from close coupled to 24", longer sizes are available on request.

P-164/264 Series Freezeless Wall Hydrant



- Residential
- Freezeless
- Anti-Siphon
- Backflow Check Valve

Soft Grip Handle

PRIER P-164 provides a year round source of water in areas that are subject to freezing temperatures. The hydrant valve is connected to the supply piping in the heated portion of the structure, eliminating the possibility of freezing. The P-164 has the added benefit of an easy quarter turn operation that features a proven compression type seal. Additionally, the P-164 features a soft grip operating handle for easy operation in wet conditions and cold weather.

Ordering the P-264 gives you the same style hydrant but with a vandal proof extended lockshield and operating key. It is available from stock in lengths close coupled to 24", longer sizes are available on request.

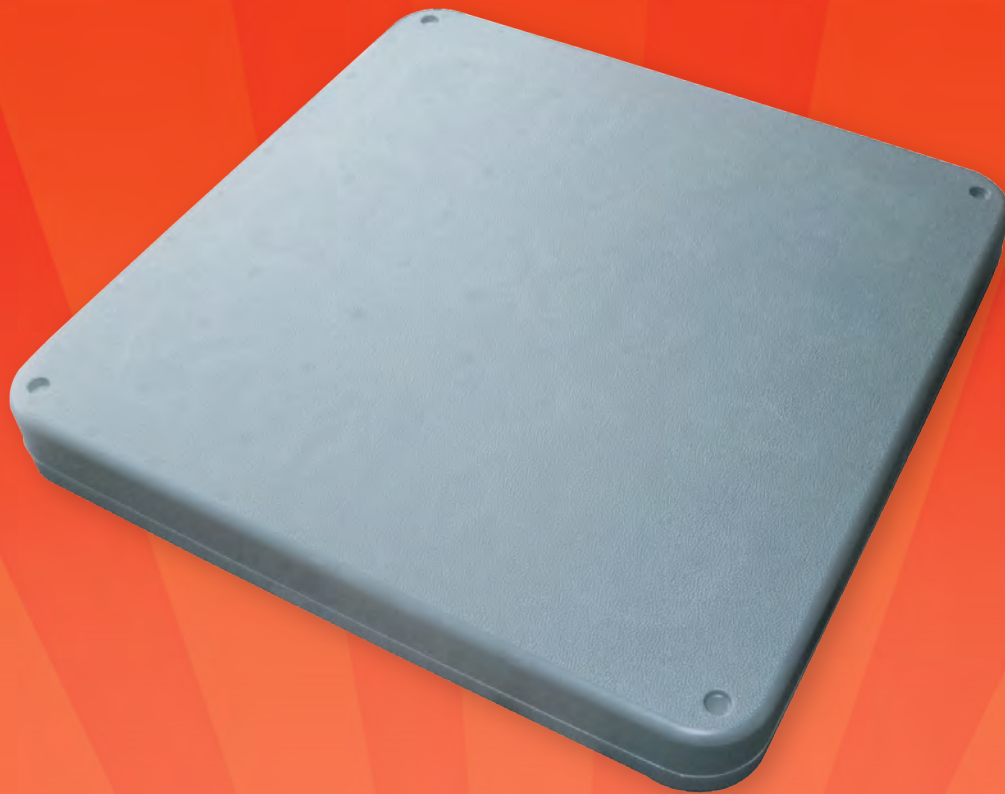
PART#	DESCRIPTION	PRICE
C144D06	C-144 SERIES 6" INSERTION (D STYLE)	\$27.99
C144D08	C-144 SERIES 8" INSERTION (D STYLE)	\$28.99
C144C06	C-144 SERIES 6" INSERTION (C STYLE)	\$32.99
C144C08	C-144 SERIES 8" INSERTION (C STYLE)	\$34.99
P164D06	P-164 SERIES 6" INSERTION (D STYLE)	\$29.99
P164D08	P-164 SERIES 8" INSERTION (D STYLE)	\$31.99





IS PROUD TO INTRODUCE
HVAC PRODUCTS!

Equipment Pads



- HIGH DENSITY POLYETHYLENE CONSTRUCTION
- DURABLE
- ANCHOR POINT DESIGN HELPS KEEP PADS STACKED

PART#	DESCRIPTION	PRICE
18041	24" X 24" X 2"	\$14.99
18043	30" X 30" X 2"	\$21.99
18050	18" X 38" X 3"	\$20.99

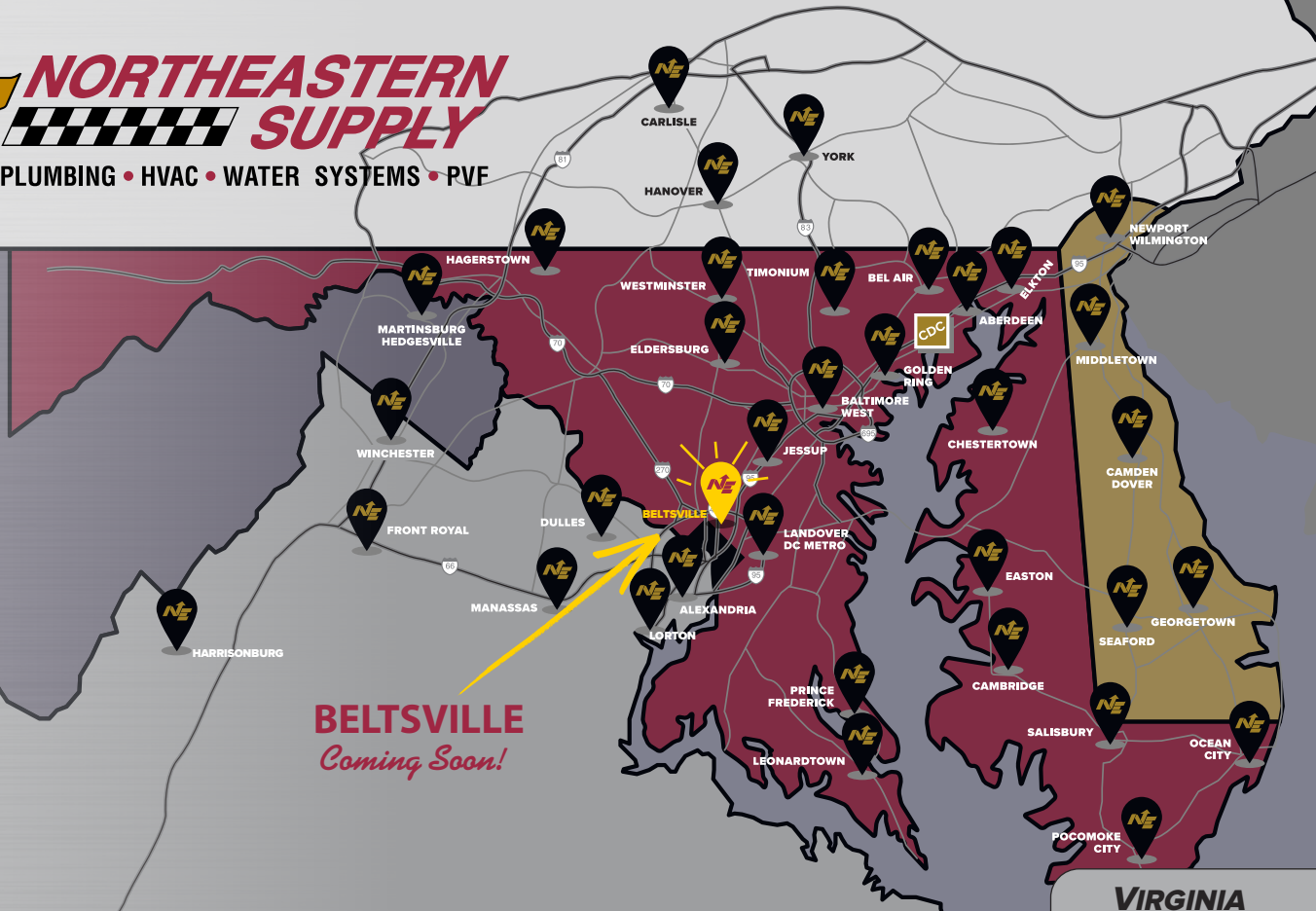
**Shop online and get 24/7
Access to your account!**

- Get Net Pricing
- Build draft orders
- View available inventory
- Create custom lists
- Check account status
- Monitor order status
- Print invoices and statements
- Download current linecards
- Discover new products and trends



NE NORTH EASTERN SUPPLY

PLUMBING • HVAC • WATER SYSTEMS • PVF



DELAWARE

MARYLAND

VIRGINIA

<p>CAMDEN/DOVER 100 S. DuPont Hwy. (Rt. 13) (302) 698-1414 (800) 906-1414/(877) 698-1414</p> <p>GEORGETOWN 20352 DuPont Blvd. (302) 856-6000/(877) 381-3232</p> <p>MIDDLETOWN 104 Patriot Drive (302) 378-7880 (800) 300-4163/(877) 378-7880</p> <p>NEWPORT/WILMINGTON 310 Water Street (302) 999-9334/(844) 642-6102</p> <p>SEAFORD 20675 Sussex Hwy. (302) 613-4040</p>
--

<p>Corporate Headquarters</p> <p>GOLDEN RING 8323 Pulaski Hwy. (410) 574-0010 (410) 574-1407 Auto. Attendant (877) 574-1407 Auto. Attendant (800) 999-5664 Switchboard (877) NE-SUPPLY Switchboard</p> <p>Central Distribution Center</p> <p>ABERDEEN 504 Advantage Avenue (410) 272-9200/(877) 636-3232</p> <p>ABERDEEN 530 S. Philadelphia Blvd. (410) 423-7155/(877) 273-7155</p> <p>BALTIMORE WEST 2304 Pennsylvania Avenue (410) 728-1133/(877) 728-1133</p> <p>BEL AIR 2100 Laurel Bush Road (410) 515-1900/(877) 569-2600</p>

<p>BELTSVILLE 11700 Trolley Lane (301) 708-3022 COMING SOON</p> <p>CAMBRIDGE 3132 Aireys Spur Road (443) 972-5950</p> <p>CHESTERTOWN 6401 Church Hill Road (410) 231-7560/(877) 710-9286</p> <p>EASTON 28659 Marys Court (410) 770-4480/(866) 770-4480</p> <p>ELDERSBURG 1430 Progress Way, Unit 114 (410) 795-8000/(877) 781-7200</p> <p>ELKTON 300 W. Main Street (410) 398-0671/(800) 398-0671</p> <p>HAGERSTOWN 1100A Business Center Drive (301) 739-7474</p>
--

<p>JESSUP 8390 Washington Blvd. (301) 490-0170/(877) 880-3041</p> <p>LANDOVER/DC METRO 3330-C 75th Avenue (301) 322-8390/(800) 838-5291</p> <p>LEONARDTOWN 26731 Radio Station Way, Bldg. (301) 475-2828/(877) 475-2828</p> <p>OCEAN CITY 9731 Stephen Decatur Hwy. (410) 213-8780/(877) 636-2326</p> <p>POCOMOKE CITY 633 Ocean Hwy. (410) 957-9700/(800) 619-9700</p> <p>PRINCE FREDERICK 5401 Ketch Road (410) 535-4375/(866) 908-3030</p>

<p>SALISBURY 2114 Shipley Drive (410) 219-1188/(866) 365-2828</p> <p>TIMONIUM 1957 Greenspring Drive (410) 252-9610/(877) 252-9610</p> <p>WESTMINSTER 110 Airport Drive, Unit B (410) 876-5855/(877) 848-7044</p> <p>PENNSYLVANIA</p> <p>CARLISLE 265 E. Pomfret Street (717) 243-1789/(800) 451-9867</p> <p>HANOVER 121 Penn Street (717) 637-2238/(800) 333-6152</p> <p>YORK 1212 E. Mason Avenue (717) 854-5534/(800) 723-7055</p>
--

<p>ALEXANDRIA 6650 Fleet Drive (703) 922-5355/(877) 751-9490</p> <p>DULLES 23700 Pebble Run Place, #175 (703) 661-0304/(888) 661-0304</p> <p>FRONT ROYAL 307 N. Commerce Avenue (540) 635-4547/(800) 461-4547</p> <p>HARRISONBURG 1136 S. High Street (540) 434-8413/(800) 296-8412</p> <p>LORTON 8397 Terminal Road (571) 380-6500</p> <p>MANASSAS 7945 Wellingford Drive (703) 330-2803/(844) 528-5578</p> <p>WINCHESTER 131 W. Brooke Road (540) 662-4158/(800) 533-1003</p> <p>WEST VIRGINIA</p> <p>MARTINSBURG 2394 Hedgesville Road (Rt.9) (304) 754-8014/(877) 754-8014</p>
